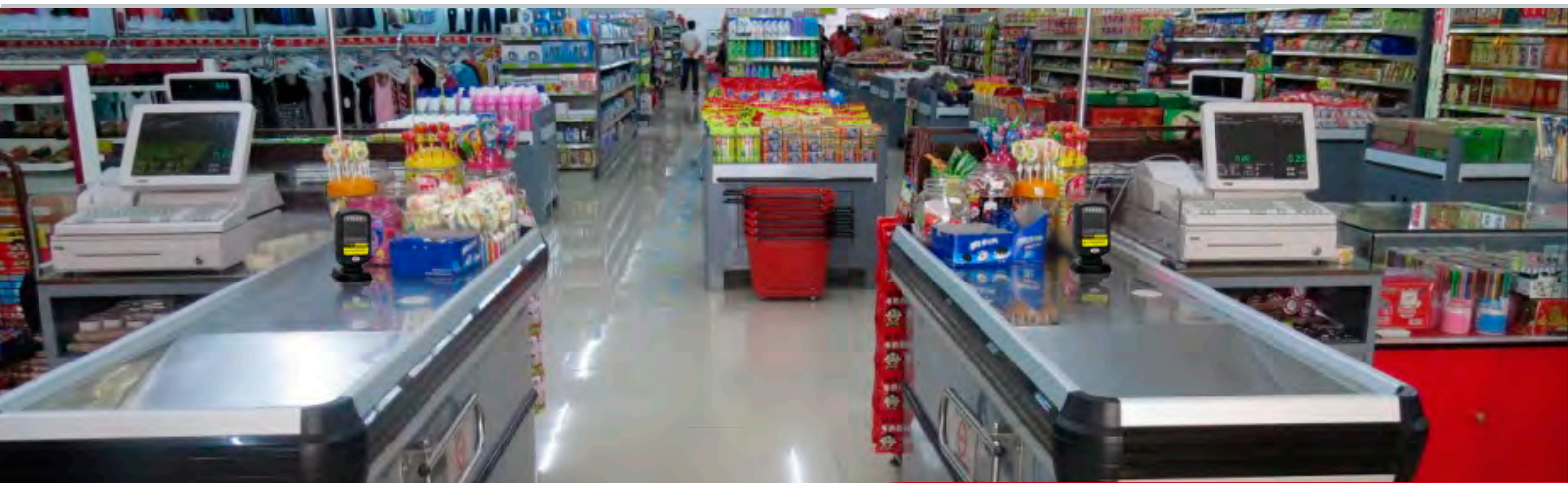


2D Desktop scanner



XL-2303



- ⊙ Aggressive reading of barcodes, on highly reflective surfaces or normal printing codes
- ⊙ Multiple common interfaces allow easy integration into different devices
- ⊙ Support automatic detection and wake up scanner to read
- ⊙ Boost customer services with good ability to scan the virtually mobile barcode on various types of display
- ⊙ A perfect solution for the medical industry, retail stores, smartphone and the banking industry applications



Model	XL-2303	Cable Standard	2m
Light Source	Red LED (Lighting) Color Temperature 650nm LED	Input Voltage	DC 5Volts
CPU	32bit MIPS @1G Hz	Working Current	< 200mA
Scan Mode	Continuous & Automatic	Stand-by Current	< 150mA
Image Size	640x480 pixel	Indicator	LED Indicator: Blue + Red LED Indicator Sound: Tune and Volume Tunable Sound Horn
Scan Speed	30 fps/s	Key Switch Reading Code	One-dimensional barcode can be read-only and one-dimensional read-only can be opened by keystrokes.
Decoding Depth	0-150mm@(13mil UPC/EAN 100%,PCS=90%)	Interface	USB-HID, USB-VCP, RS-232 Serial Port
Minimum Resolution	≥4mil	Temperature (Operating)	0°C-50°C
Scan Angle	Deflection 360° Inclination ±62° Rotation ±60°	Temperature (Storage)	-20°C-60°C
Scan Direction	Omnidirectional	Humidity	5% to 95% (non-condensing)
Size	L × W × H:84.6mm × 82.6mm × 145.9mm	Light Levels	0-5000Lux (fluorescence), 0-100,000 Lux (sunlight)
Case Material	ABS+PC, Flame Retardant Material		
Decoding Capability	1D: UPC,EAN,Code 39 (with full ASCII),Codabar,Code 128,Code 93,Code 11,Interleaved 2 of 5,Industrial 2 of 5; Matrix 2 of 5,MSI Plessy,GS1 DataBar,etc 2D: PDF417,Data Matrix,QR Code		



SUNLUX IOT Technology (Guangdong) Inc.

Office Add: 4F,No.7 ,Kehui First Street ,Science Road,Science City,Guangzhou,China

Tel: +86-20-32053765 Fax: +86-20-82115390 Site: www.xl-scan.com E-mail: sales@xl-scan.com